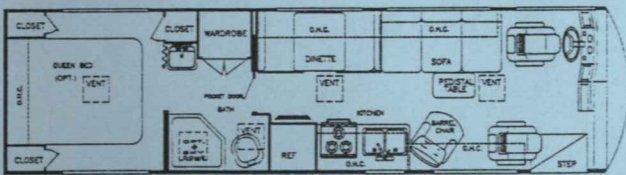


2/94

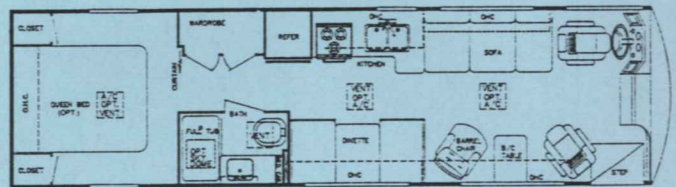


# Sun Voyager DIESEL

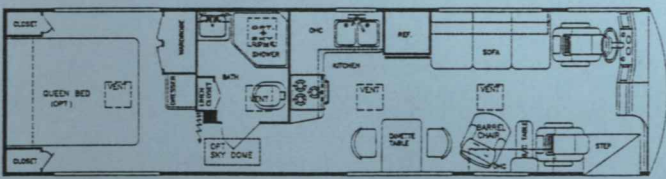
by Gulf Stream



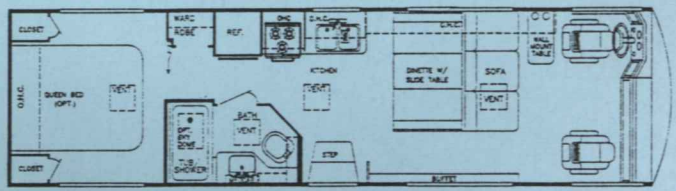
MODEL 8293



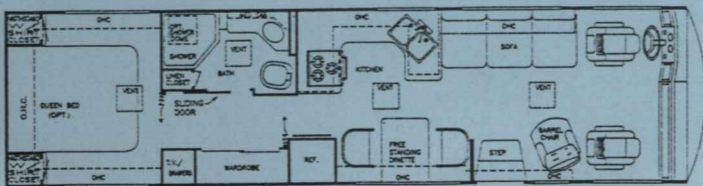
MODEL 8313



MODEL 8324



MODEL 8326 (102" Wide)



MODEL 8349 (102" Wide)

# Sun Voyager

## Standard Specifications

### Interior and Decor

- High Pressure Laminate Countertops w/Oak Edge
- Custom Padded Dash w/Illuminated Gauges
- Windshield Privacy Drape
- Deluxe Carpet w/Pad
- Deluxe Furniture
- 3-Way Driver Seat
- Coordinated Bedspreads & Shams
- Oak-Framed Decorator Mirror
- Generous Overhead Storage

### Exterior and Construction

- Heated & Fully Enclosed Holding Tanks
- Super Structure Steel Truss Floor System
- Tubular Steel Cage Construction (18 Gauge, 1-1/2" x 1-1/2")
- Laminated Floors w/Metal Underbelly
- 1-1/2" Block Foam Insulation in Floor and Walls
- Fully-Welded Steel Firewall
- Sealed Perimeter & Engine Compartment
- Laminated Fiberglass Exterior
- Panoramic Windshield
- Tinted Windshield & Windows
- Outstanding Exterior Storage
- Deluxe Outside Mirrors
- Radius Rubber Roof w/"Soft Touch" Carpeted Ceiling

### Bath and Water

- Dual Holding Tanks - Approx. 90 Gal.
- Fresh Water Tank - Approx. 50 Gal.
- Demand Water System
- City Water Hook-Up
- Double Stainless Steel Sink Tub/Shower Combination
- Marine Toilet
- Gravity Drains on Fresh Water Lines

### Chassis

- Spartan EC 2000, 18,000 lb. GVWR Chassis w/ Cummins 6BT 5.9, 190 HP @ 2500 RPM, 475 ft. lb. Torque @ 1700 RPM, w/Allison AT-542 4-Speed Automatic Transmission, Turbo-Charged Rear Mounted Diesel Engine
- Spartan Discovery 6.5 190 HP @ 3400 RPM 380 ft. lb. Torque @ 1700 RPM, Turbo-Charged Rear Mounted Diesel Engine - (Model 8293 Only)
- Optional Cummins 6BT 5.9, 230 HP @ 2500 RPM 605 ft. lb. Torque @ 1700 RPM, w/6-Speed Automatic Transmission
- Front and Rear Axles w/Tapered Leaf Springs and Shock Absorbers
- 105 Amp DELCO Alternator
- 1125 CCA Battery
- Air Over Hydraulic 15" Dia. Front and Rear Disc Brakes w/Air Actuated, Spring Applied Parking Brake
- Power Steering and Brakes
- Fuel Tank: Approx. 60 Gal.
- Rear Axle Ratio: EC 2000 - 19.5 Tires/3.23:1
- Wheel Base: Model 8293 (EC 2000) - 160" Model 8313/8324/8326 - 190" Model 8349 - 208"
- Exterior Length (Approx.): Model 8293 - Approx. 30' Model 8313/8324/8326 - Approx. 32' Model 8349 - Approx. 34'
- High Capacity Automotive Heater
- Tilt Steering Wheel
- Interior Height - 6' - 8"
- Exterior Height - 10' - 3" (w/o air conditioner)

### Electrical Systems

- Easy-Access Dual Battery System
- 12-Volt, 45-Amp Converter w/Batt. Charger
- Electric Supply Cord
- Electric Overload Protection
- Generator Compartment
- Automotive-Type, Color-Coded Wiring
- Quad Headlight System

### Appliances

- 3-Burner High-Performance Range w/Oven
- Lighted, Power Range Hood
- 2-Door, 2-Way Refrigerator
- Microwave Ready

### Heating, Ventilation & Air Cond.

- 30,000 BTU Ducted Furnace w/Elec. Ign.
- 40,000 BTU Ducted Furnace w/Elec. Ign. (Models 8326, 8349)
- Pre-Wired for Roof Air Conditioner
- Ducted Roof Air in 102" Wide-Body U

### Deluxe Standard Features

- Auto Dash Air Conditioner
- Auto Cruise Control
- Wheel Covers
- Power Vent in Bathroom
- 85 Lb. LP Tank
- AM/FM Cassette w/4 Speakers
- Monitor Panel

For further information and available floorplan options, contact your nearest dealer or Gulf Stream Coach, Inc. Also ask about our other Class A motorhomes, Class C motorhomes, Travel Trailers and Fifth Wheels. Gulf Stream Coach, Inc. reserves the right to make changes in prices, colors, materials, components and specifications and to discontinue models at any time without notice or obligation. Gulf Stream Coach, Inc. assumes no responsibility for any error in type or print reproduction of specifications or floorplans in this brochure. TP 20M 294



**Gulf Stream Coach, Inc.**

P.O. Box 1005 • Nappanee, IN • 46550

Your Dealer